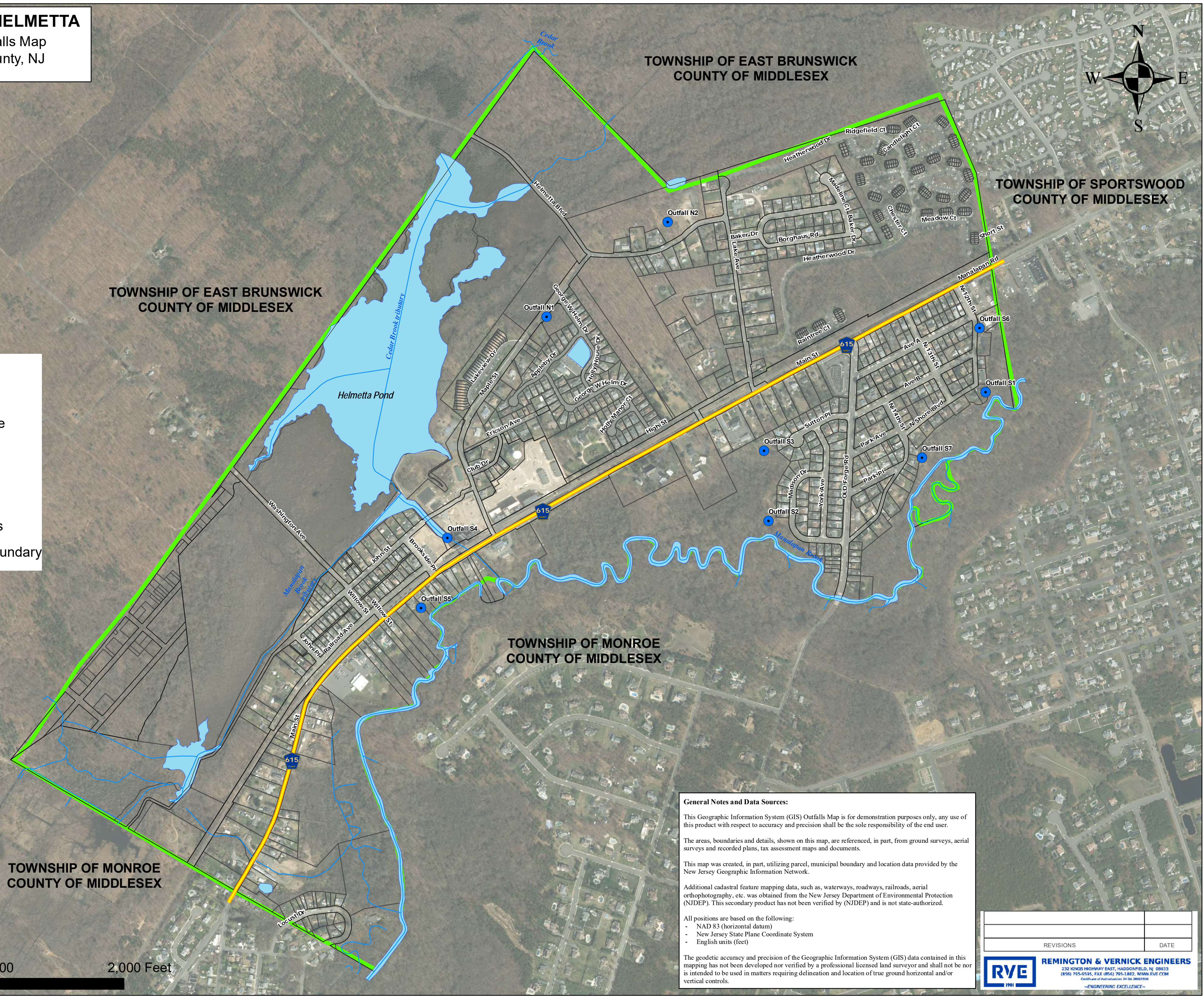




**Legend**

- Outfalls
- County Route
- ROW
- Parcels
- Streams
- Water Bodies
- ▭ Municipal Boundary



0 500 1,000 2,000 Feet

**General Notes and Data Sources:**

This Geographic Information System (GIS) Outfalls Map is for demonstration purposes only, any use of this product with respect to accuracy and precision shall be the sole responsibility of the end user.

The areas, boundaries and details, shown on this map, are referenced, in part, from ground surveys, aerial surveys and recorded plans, tax assessment maps and documents.

This map was created, in part, utilizing parcel, municipal boundary and location data provided by the New Jersey Geographic Information Network.

Additional cadastral feature mapping data, such as, waterways, roadways, railroads, aerial orthophotography, etc. was obtained from the New Jersey Department of Environmental Protection (NJDEP). This secondary product has not been verified by (NJDEP) and is not state-authorized.

All positions are based on the following:

- NAD 83 (horizontal datum)
- New Jersey State Plane Coordinate System
- English units (feet)

The geodetic accuracy and precision of the Geographic Information System (GIS) data contained in this mapping has not been developed nor verified by a professional licensed land surveyor and shall not be nor is intended to be used in matters requiring delineation and location of true ground horizontal and/or vertical controls.

REVISIONS		DATE

**RYE** 1991

**REMINGTON & VERNICK ENGINEERS**  
232 KINGS HIGHWAY EAST, HADDONFIELD, NJ 08033  
(856) 755-6545, FAX (856) 795-1882, WWW.RVE.COM  
Certificate of Authorization: 24 0A 28803500  
—ENGINEERING EXCELLENCE—