

RECYCLING SERVICE INFORMATION

(800) 488-MCIA (6242)

Municipal recycling schedules available at
www.mciauth.com

MCIA DIVISION OF RECYCLING

55 Edgeboro Road
East Brunswick, NJ 08816
Phone: (800) 488-MCIA
Fax: (732) 628-0338

E-mail: mcia Recycling@mciauth.com
Edward J. Windas, Recycling Manager

MCIA ADMINISTRATIVE OFFICE

101 Interchange Plaza, Ste. 202
Cranbury, NJ 08512
Phone: (609) 655-5141
Fax: (609) 655-4748

E-mail: mciaadmin@mciauth.com
Web site: www.mciauth.com

MCIA BOARD

Leonard J. Roseman, *Chairman*
Robert J. Mantz
Jacque Eaker
Anthony Raczynski
Camille Fericola
Richard Pucci, *Executive Director*

MIDDLESEX COUNTY BOARD OF CHOSEN FREEHOLDERS

Stephen J. Dalina, *Freeholder Director*
Christopher D. Rafano, *Deputy Freeholder Director*

Carol Barrett
H. James Polos
Ronald G. Rios
Mildred S. Scott
Blancaita B. Valenti

Requests for assistance or materials in alternate
formats should be directed to

Jane S. Leal by phone at (609) 655-5141,
through the New Jersey Relay Service at
(800) 852-7899 or by e-mail at jl@mciauth.com.

10279 8.09

PSSRT STD
U. S. Postage
PAID
A & E Mailers

HELMETTA Curbside Collection Schedule Inside!

MCIA DIVISION OF RECYCLING
55 Edgeboro Road, East Brunswick, NJ 08816
(800) 488-MCIA • E-mail: mcia Recycling@mciauth.com

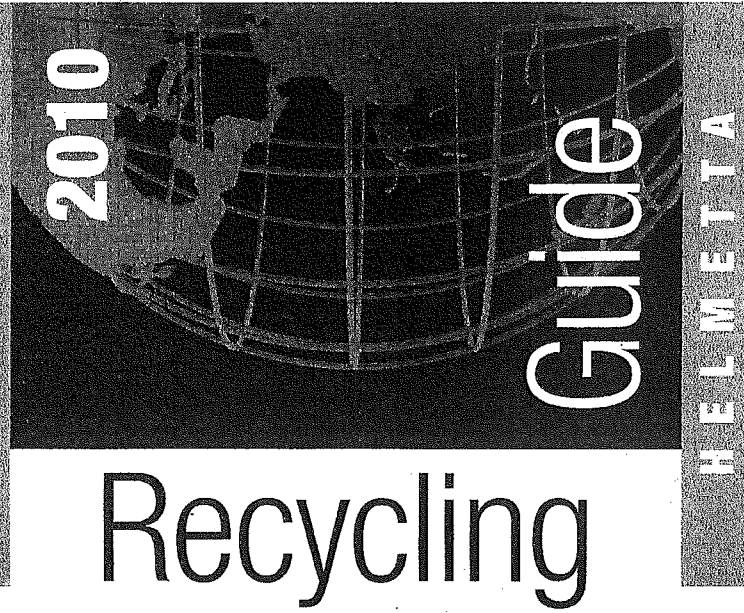


MCIA Board
Christopher D. Rafano
Freeholder Deputy Director & MCIA Liaison
Leonard J. Roseman, Chairman
Robert J. Mantz
Jacque Eaker
Anthony Raczynski
Camille Fericola
Richard Pucci
Executive Director

PROPERTY OWNERS: PLEASE MAKE SURE YOUR TENANTS RECEIVE THIS IMPORTANT INFORMATION
Printed on 100% recycled paper.

Middlesex County
Improvement Authority

800-488-MCIA • www.mciauth.com



NEW for 2010:
Tissue, cereal, pizza, shoe and gift boxes should now be placed with corrugated cardboard.
Newspaper should now be placed in the rectangular bin with mixed paper.

2010 RECYCLING GUIDE AND CURBSIDE COLLECTION GUIDE

800-488-MCIA • www.mciauth.com • 800-488-MCIA • www.mciauth.com

CURBSIDE COLLECTION

CONTAINERS

Containers used for the MCIA's program include:

- A rectangular blue container with lid for newspaper and mixed paper
- A round blue container for commingled recyclables (cans, bottles and plastic containers)

Write your name and address on the containers. Place your recyclables in the proper containers and put the containers out on the curb before 6 a.m. on your collection day.

Collection times are subject to change, and all materials must be ready for pickup by 6 a.m.

NOT ACCEPTED!

- Recyclables in plastic bags
- Recyclables in containers not at the curb, such as those left near the house, garage or at the top of the driveway

If you have more newspaper and mixed paper than you can fit in your rectangular container, place the overflow in brown paper grocery bags (not plastic grocery bags).

Replacement Containers: If your containers are lost, stolen or broken, replacement containers can be purchased from your municipal recycling coordinator. The phone number is listed in the municipal section of this flyer. We sell these containers to your municipality at the same price we pay the manufacturer.

New Residents: Contact your municipal recycling coordinator to obtain free containers. Contact numbers can be found in the municipal section of this flyer.

NEW FOR 2010:

Newspaper should now be placed in the rectangular bin with mixed paper.

NEWSPAPER AND MIXED PAPER

Newspaper, magazines, catalogs, junk mail, brown paper bags, nonmetallic wrapping paper, office records, computer paper, file folders, receipts, telephone books, softcover books, hardcover books with covers removed and greeting cards.

Place newspaper and mixed paper in the blue rectangular bin. Close the lid tightly when you leave the bin at the curb.

NOT ACCEPTED!

- Newspaper and mixed paper in plastic bags or paper leaf bags

NEW FOR 2010:

Issue, cereal, pizza, shoe and gift boxes should now be placed with corrugated cardboard.

FREQUENTLY ASKED QUESTIONS

WHAT IF MY COLLECTION DAY FALLS ON A HOLIDAY?

If your collection day falls on any of these holidays – New Year's Day, Memorial Day, Independence Day, Labor Day, Thanksgiving or Christmas – collection is rescheduled for the following Saturday. Check your municipal collection schedule in this brochure for specific dates.

Recycling collection is *not affected* by municipal public works holidays, such as Martin Luther King Jr. Day, Lincoln's Birthday, Presidents' Day, Good Friday, Columbus Day, Election Day or Veterans Day. Collections will take place on those days.

WHAT DO THE BRIGHT ORANGE OR BRIGHT GREEN STICKERS ON MY RECYCLABLE ITEMS MEAN?

These are rejection stickers. The most common reasons for rejection are:

- Trash mixed in with recyclables
- Containers larger than 32 gallons
- Recyclables in plastic bags
- Cardboard not properly prepared

Only recyclables that are properly sorted and prepared will be collected.

WHAT IF MY RECYCLABLES WERE NOT COLLECTED?

Your recyclables should be placed curbside the night before your scheduled pickup or by 6 a.m. on the day of the pickup. Collection times are subject to change, and all material must be ready for pickup by 6 a.m.

If your recyclables were out at the curb on time and were not collected, call us within 24 hours. If you delay calling, your recyclables may not be picked up until your next collection date.

WILL BAD WEATHER AFFECT MY PICKUP?

Collections are rarely canceled due to weather conditions. However, if extremely severe weather conditions exist, please refer to our web site at www.mciauth.com, or call (800) 488-MCIA (6242) to find out if collections will take place as scheduled. For safety purposes, if snow or ice conditions exist and collections are made, please ensure your collection containers are visible and easily accessible.

On windy and rainy days, make sure the lid on the mixed-paper (rectangular) container is secure. In your commingled recyclables (round) container, place the heavier items, such as glass bottles and jars, on the top of the pile so that the aluminum cans and plastic bottles won't blow away.

AS A NEW RESIDENT, HOW DO I OBTAIN CONTAINERS?

New residents should contact their municipal recycling coordinator to obtain one free rectangular container with lid and one free round commingled container. Additional containers can be purchased.

Saturday, May 15, 8 a.m. to 2 p.m.
Middlesex County Highways Dept.
750 Jernee Mill Road, Sayreville

Sunday, July 18, 8 a.m. to 2 p.m.
Old Bridge Public Works Dept. • Old Bridge Municipal Complex, Rt.516, Old Bridge

Saturday, September 18, 8 a.m. to 2 p.m.
Woodbridge Public Works Dept. • 225 Smith Street, Keasbey

For directions and information:

Contact the Middlesex County Division of Solid Waste Management, (732) 745-4170 or e-mail solidwaste@co.middlesex.nj.us.

PAINT DROP-OFF

Middlesex County's award-winning paint drop-off program features nine permanent paint sites, where paint and paint-related products are collected and properly disposed of. Open to Middlesex County residents only (proof of County residency will be requested).

The program was created by the MCIA, the County Division of Solid Waste Management, the Solid Waste Advisory Council and the Board of Chosen Freeholders.

Items Accepted: Latex, water and oil-based paint, stains, varnishes, lacquers, thinners, paint in aerosol spray cans.

PAINT DROP-OFF SITES AND HOURS

Closed holidays and some holiday weekends.

Call (732) 745-4170 to confirm.

Notes: In months that have five Saturdays, no sites are open on the fifth Saturday.

1st Saturday of the Month

- Middlesex Borough Recycling Center: 7 a.m. to 3 p.m.
1200 Mountain Ave., Middlesex Borough
- East Brunswick Reclamation Center: 8 a.m. to 4 p.m.
357 Dunhams Corner Road, East Brunswick

2nd Saturday of the Month

- Dunellen Public Works: 8 a.m. to 2 p.m.
235 Hall Street, Dunellen
- New Brunswick Public Works: 8 a.m. to noon
400 Jersey Ave., New Brunswick
- Old Bridge Public Works: 7 a.m. to 3 p.m.
1 Old Bridge Plaza, Municipal Center, Old Bridge

3rd Saturday of the Month

- South Plainfield Recycling Center: 8 a.m. to 2 p.m.
Kenneth Ave., South Plainfield
- Helmetta Borough Hall: 8 a.m. to noon
60 Main Street, Helmetta

4th Saturday of the Month

- Woodbridge Municipal Services Center: 8 a.m. to 4 p.m.
225 Smith Street, Keasbey
- South Brunswick Recycling Center: 8 a.m. to 4 p.m.
540 Ridge Road, Monmouth Junction

CARDBOARD/PAPERBOARD

Corrugated cardboard, layered cardboard with a center that is shaped into ridges, folds or grooves (such as shipping boxes and the packaging for most appliances or larger household items), and paperboard such as non-wax-coated food and cereal boxes, pizza boxes, tissue boxes, shoe boxes and gift boxes.

Flatten the cardboard and tie the sheets into stacks no larger than 24 inches square and 24 inches high.

NOT ACCEPTED!

- Cardboard in bundles larger than 24 inches square
- Cardboard in plastic bags

Note: The maximum number of recycling bundles of cardboard and/or paper bags of mixed paper that the collector will pick up from individual households, each collection, is six (6).

CANS, BOTTLES AND PLASTIC

COMMINGLED RECYCLABLES

Place metal cans, glass and plastic bottles in the round, blue container provided by the MCIA. Any overflow can be placed in your own unlidged plastic or metal container (no larger than 32 gallons in capacity). Please do not overfill containers.

Metal: Tin, steel, aluminum and bimetal cans (such as soda, beer, canned pet food, soup and tuna cans). Rinse the cans and crush them to maximize capacity. We take the lids, too.

Glass: Glass bottles and jars of all colors (such as juice, soda, beer and liquor bottles and mayonnaise and spaghetti sauce jars). Rinse the bottles and jars. Remove and dispose of lids.

Plastic: #1 PETE and #2 HDPE containers (such as milk and juice jugs, water bottles and laundry detergent, shampoo and soda bottles). Check the bottom of the container to make sure the plastic is either #1 PETE or #2 HDPE. Rinse the containers and crush them to maximize capacity. Remove and dispose of caps.

NOT ACCEPTED!

- drinking glasses
- window glass
- mirrors
- Pyrex glassware
- lightbulbs
- plastic toys
- plastic packaging
- aluminum foil
- gardening or garage plastics
- polystyrene or Styrofoam (such as plastic cups or food trays)

TEXTILES

Clean, dry clothing or fabric larger than 12 square inches and other recyclable textiles such as shoes, belts or handbags.

Place the clothing or fabric in the textile bag. Close the bag securely and leave it at the curb with your other recyclables. Call or e-mail us if you need an additional bag.

NOT ACCEPTED!

- comforters
- pillows
- rugs

YARD WASTE

Most Middlesex County municipalities participate in the Yard Waste program, which collects leaves, grass clippings and brush less than 5 inches in diameter. Call your municipality to ask which materials are collected and recycled and the method of collection (curbside or bringing them to a central location).

CONSUMER ELECTRONICS

Middlesex County has a permanent drop-off site for unwanted, outdated and nonworking consumer electronic items, and this program is sponsored by the Middlesex County Board of Chosen Freeholders.

It is located at the office of Hesstech, LLC, 45 Executive Avenue, Edison.

Hours: First Saturday of each month from 9 a.m. to 1 p.m. and the third Monday of each month, from noon to 4 p.m. Closed holidays and some weekends

Free to Middlesex County residents (proof of residency will be requested)

Items Accepted: Computer equipment (including CPUs, monitors, keyboards, scanners, modems, printers and cables), TVs, VCRs, telephones, irons, fluorescent lamps, compact fluorescent bulbs, thermostats and thermometers containing mercury

For directions and information: Contact the Middlesex County Division of Solid Waste Management, (732) 745-4170 or e-mail solidwaste@co.middlesex.nj.us.

NOT ACCEPTED!

- Microwaves

Some Middlesex County municipalities accept consumer electronics at their municipal drop-off center. Call your municipal recycling coordinator for more information.

HOUSEHOLD HAZARDOUS WASTE

(HHW) DROP-OFF DATES

- Seven household hazardous waste drop-off events will be held in 2010 at various locations. **HHW DROP-OFF IS FREE!**

RULES:

- Middlesex County residents only (proof of County residency may be requested)
- Residential waste only. No waste from commercial or industrial sources
- No containers larger than 10 gallons
- Leave HHW materials in their original containers whenever possible. If materials are not in original containers, label the container to indicate contents

Items accepted include (but are not limited to):

batteries, aerosol cans, antifreeze, car batteries, household batteries (rechargeable and button cell ONLY), brake fluid, drain cleaner, driveway sealer, fluorescent light bulbs (no broken bulbs, please), herbicides, kerosene, lighter fluid, mercury thermometers, motor oil, oil filters, oven cleaner, pesticides, petroleum lubricants, photographic chemicals, pool chemicals, propane tanks, transmission fluid

2010 HHW DROP-OFF DATES & LOCATIONS:

Sunday, March 21, 8 a.m. to 2 p.m.
Sunday, November 21, 8 a.m. to 2 p.m.
Middlesex County College • Woodbridge Avenue and Mill Road (entrance on Mill Road), Edison
Saturday, April 17, 8 a.m. to 2 p.m.
Saturday, October 16, 8 a.m. to 2 p.m.
Middlesex County Highways Dept. • Apple Orchard Lane, North Brunswick

KEEP IN MIND!

The Middlesex County Division of Solid Waste Management hosts several other recycling programs including:

- Household battery drop-off sites
- Tires (automobile and light-truck) drop-off sites
- Paper shredding events for old records, confidential documents and related paperwork
- Mercury thermometer exchanges

Call (732) 745-4170, e-mail solidwaste@co.middlesex.nj.us or visit <http://co.middlesex.nj.us/planningboard/solidwaste.asp> for information.

COMPOST BINS

Composting is a natural process by which grass clippings, yard waste and even kitchen scraps break down or decompose to form a rich soil-like substance to fertilize or condition soil.

The Middlesex County Division of Solid Waste Management subsidizes the sale of compost bins to County residents.

Bins can only be purchased on the first and third Wednesday of each month, between 11 a.m. and 2 p.m., at the MCIA Recycling Office, 55 Edgeboro Road, East Brunswick.

Three types of bins are available, ranging in price from \$5 to \$40. A free kitchen pail and composting guide are included with each purchase.

For information on bins: Contact the Middlesex County Division of Solid Waste Management, (732) 745-4170 or e-mail solidwaste@co.middlesex.nj.us.

For information on composting: Call the Rutgers Cooperative Research and Extension Master Gardener Helpline (732) 398-2586, or visit www.rce.rutgers.edu. A *Guide to Backyard Composting* is available from the Division of Solid Waste Management.

COMMUNITY EDUCATION

PRESENTATIONS

As part of our commitment to protect the environment and promote good recycling practices, the MCIA Education Department delivers free recycling presentations to schools, civic and business organizations, senior citizen clubs and other groups.

We have several presentations that can be modified to meet the expectations of any group. All of the presentations involve MC Blue, the fully recyclable recycling robot, who is accompanied by an MCIA representative. For information, visit our web site at www.mciauth.com.

COMMUNITY EVENTS

The MCIA offers a recycling education booth for County and municipal events as well as corporate and nonprofit health fairs. The booth is free and is staffed by MCIA representatives. MC Blue often makes an appearance.

RESERVATIONS

Reservations for presentations and/or the booth must be made in advance, in writing. Bookings are on a first-come, first-served basis.

For information or reservations, Call the MCIA Education Office at (609) 409-5033, or e-mail ja@mciauth.com.

CURBSIDE COLLECTION SCHEDULE

MONDAYS

January	11 • 25	July	12 • 26
February	8 • 22	August	9 • 23
March	8 • 22	September	*11 • 20
April	5 • 19	October	4 • 18
May	3 • 17	November	1 • 15 • 29
June	*5 • 14 • 28	December	13 • 27

***Holiday Pickup Date Changes**

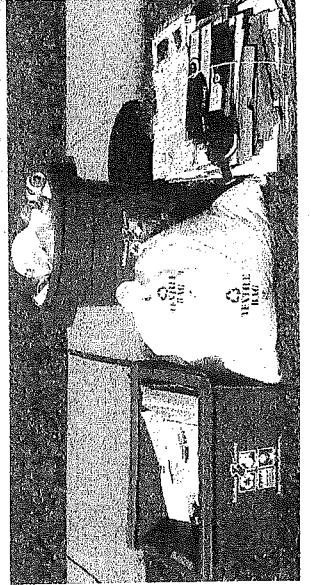
Memorial Day: May 31 changed to June 5
 Labor Day: September 6 changed to September 11

HOLIDAYS

Recycling collection holidays for 2010: New Year's Day, Memorial Day, Independence Day, Labor Day, Thanksgiving and Christmas. If your collection day falls on any of these holidays, collection is rescheduled for the following Saturday.

Note: Municipal Public Works holidays do NOT affect the recycling collection schedule.

thank you...
 for your commitment to
 recycling and for helping to
 make Middlesex County a
 New Jersey recycling leader.



IMPORTANT PHONE NUMBERS

(732) 521-4946, ext. 110
 Supervisor Darren Doran, Department of Public Works
 (732) 521-4946, ext. 100
 Sandra Bohinski, Recycling Coordinator
 Recycling Hotline: (800) 488-MCIA (6242)
 Curbside Recycling Collection, Service Matters & Information

WEATHER EMERGENCIES

Changes in collection schedules due to weather emergencies or other emergency situations will be announced on the following radio stations: WCTC (1450 AM) and WMMQ (98.3 FM). You may also check for changes on the web site at www.mciauth.com or by calling (800) 488-MCIA (6242) for specific information.

LEAVES, BRUSH & GRASS

LEAVES are collected curbside. Put leaves in biodegradable paper bags and place at the curb for spring and fall collection. For schedule information, call (732) 521-4946, ext. 110.

BRUSH must be placed curbside for chipping on the second and fourth Friday of the month from May to October. Call (732) 521-4946, ext. 110, to schedule an appointment.

GRASS CLIPPINGS are collected upon request. Place the clippings in plastic bags and place at the curb. Call (732) 521-4946, ext. 110, to schedule a pickup. However, it is recommended that residents participate in the "Cut It and Leave It" grass fertilizing program. Leave the grass clippings on the lawn for natural fertilization. Avoid time-consuming raking and the expense of bagging your grass clippings.

BOOK SMART

Students throughout the County are getting hands-on recycling education with the introduction of a book recycling program sponsored by the MCIA and the County. Outdated hardcover and softcover books that can no longer be used, sold or given away are being recycled in this program. Students remove the hard covers from books and then reap the rewards: The recycling processor pays for each ton recycled.

"With all the talk about green technology, recycling is something basic that we all can do every day in our homes, schools, and workplaces to improve the environment and save precious resources."

— Richard Pucci,
 Executive Director, MCIA

SPECIAL ITEMS

HELMETTA'S RECYCLING DROP-OFF CENTER is located at 60 Main Street. It is open 7 a.m. – 3 p.m., Monday – Friday, and 7 a.m. – 12 noon on the 1st, 3rd & 5th Saturday of the month. Used motor oil, auto tires (no rims) and rechargeable and button cell household batteries only are accepted.

WHITE GOODS/APPLIANCES are collected on the third Saturday of the month by appointment only. Call (732) 521-4946, ext. 110, to arrange a pickup.

ELECTRONICS, including computers, monitors, CPUs, printers, scanners, modems, cables, keyboards, televisions, irons, fluorescent lightbulbs, thermostats and thermometers (containing mercury) can be dropped off the third Saturday of the month, 8 a.m. – 12 noon.

SHRED IT!

Middlesex County residents are invited to recycle old documents and confidential files safely and securely at mobile shredding events scheduled throughout the year. Bring old files, receipts, bills, financial statements and any documents that have not been recycled due to confidentiality concerns and watch them get shredded on-site. Call the County Division of Solid Waste Management, (732) 745-4170, for dates and locations.